

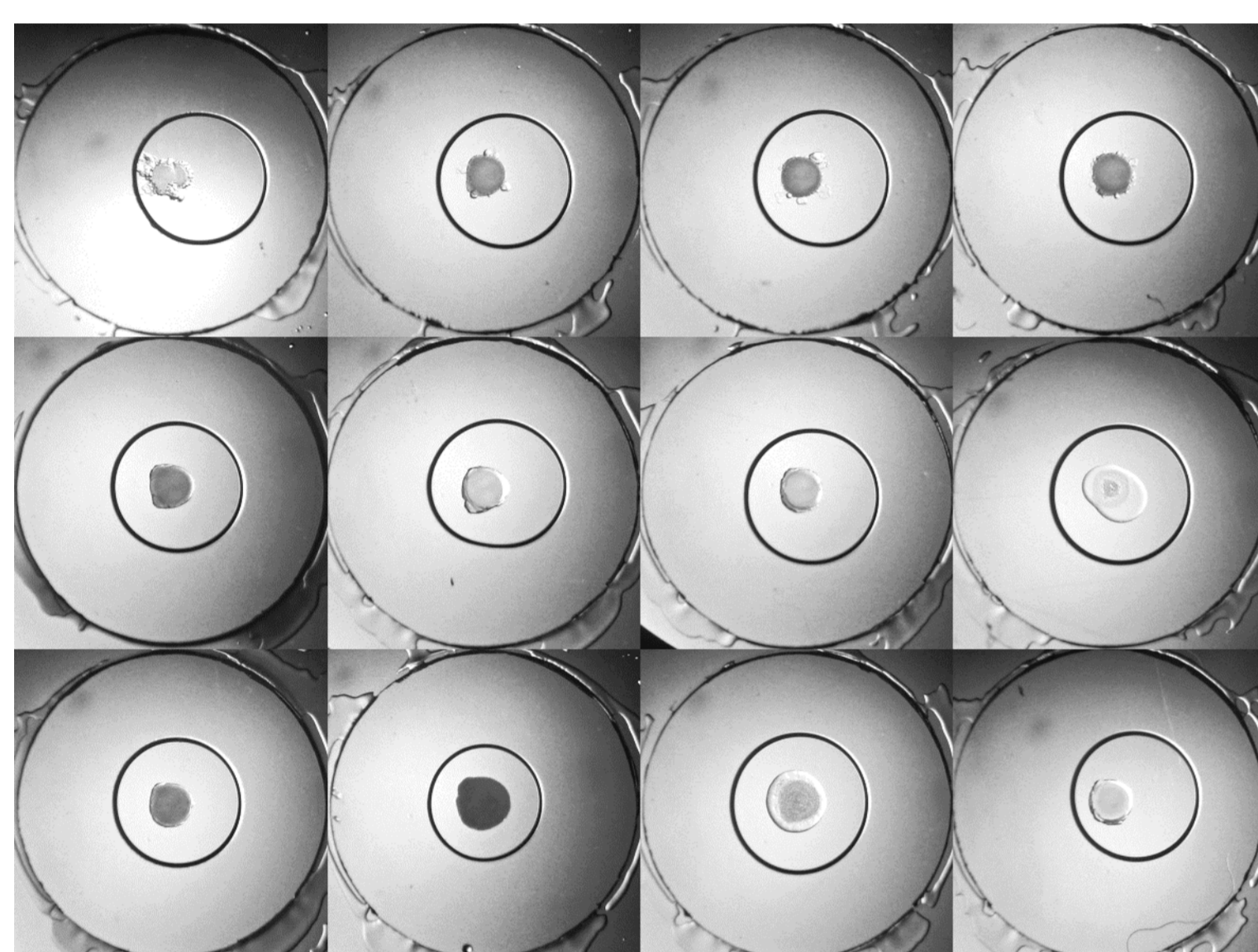
Oryx4/8 LCP - Robotic LCP dispensing



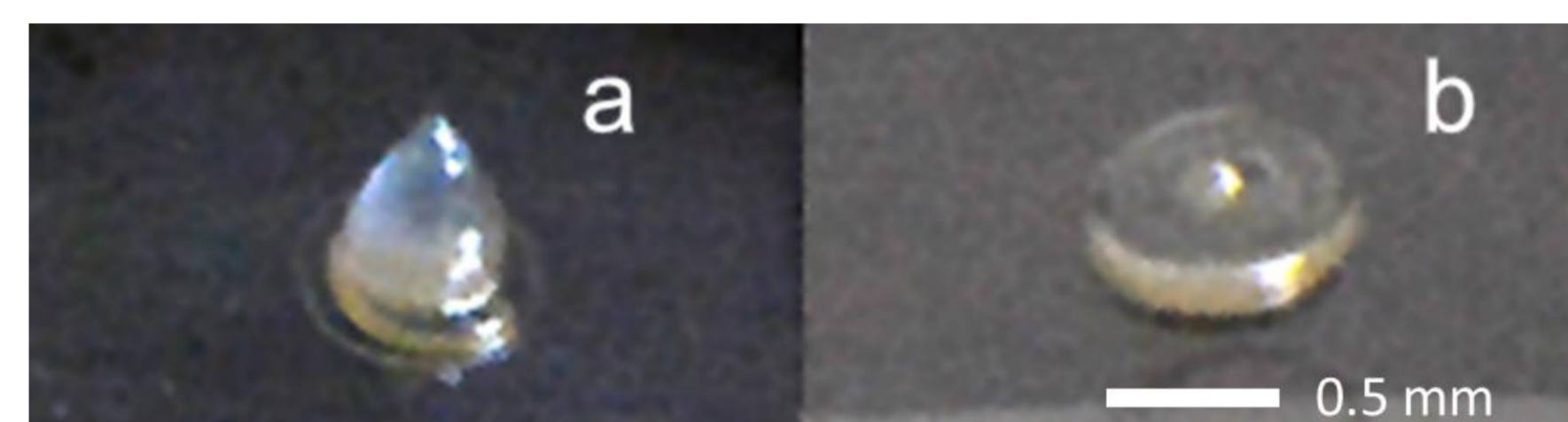
Dispensing LCP to glass sandwich plates



Dispensing LCP to coverslips



Sandwich plate screen:
100nL LCP
+ 1uL precipitant

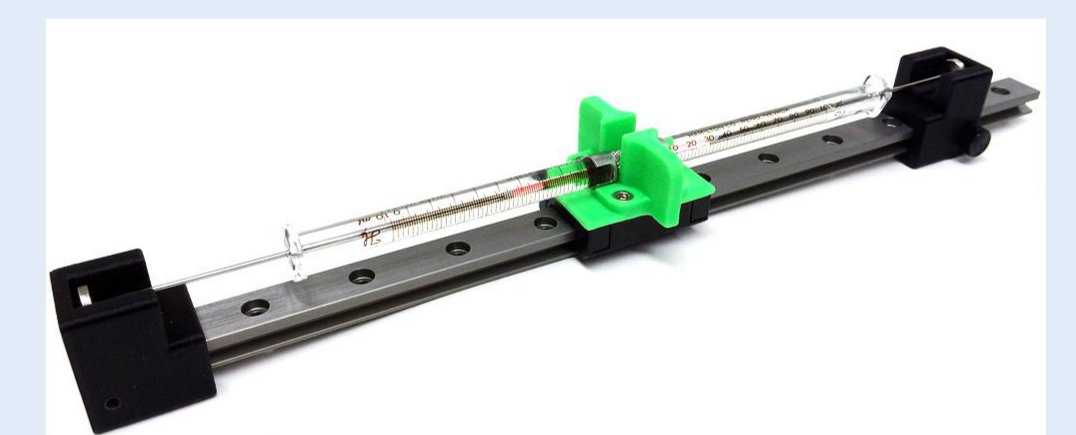


a. Taller conical bolus
b. Wider disc bolus

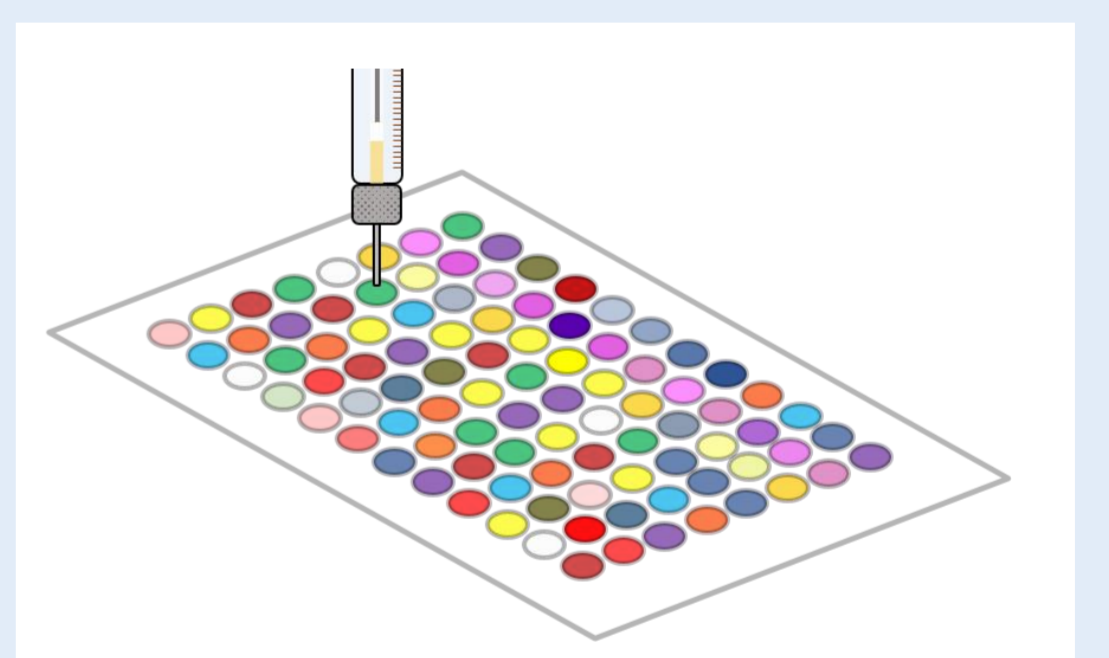
- LCP dispensing is available as an option for Oryx4 or Oryx8
- Dispense any volume of LCP down to 10 nL
- Dispense LCP to almost any plate
- Oryx LCP can dispense LCP to 24 well coverslips or MiTeGen In Situ-1 plates for hanging drop
- Oryx LCP can setup screening, additive screening, and optimization LCP experiments
- Specify the LCP bolus shape. This ensures bridging of smaller boluses when dispensing to sandwich plates and accurate dispensing of sticky LCP mixtures

Oryx LCP - Workflow

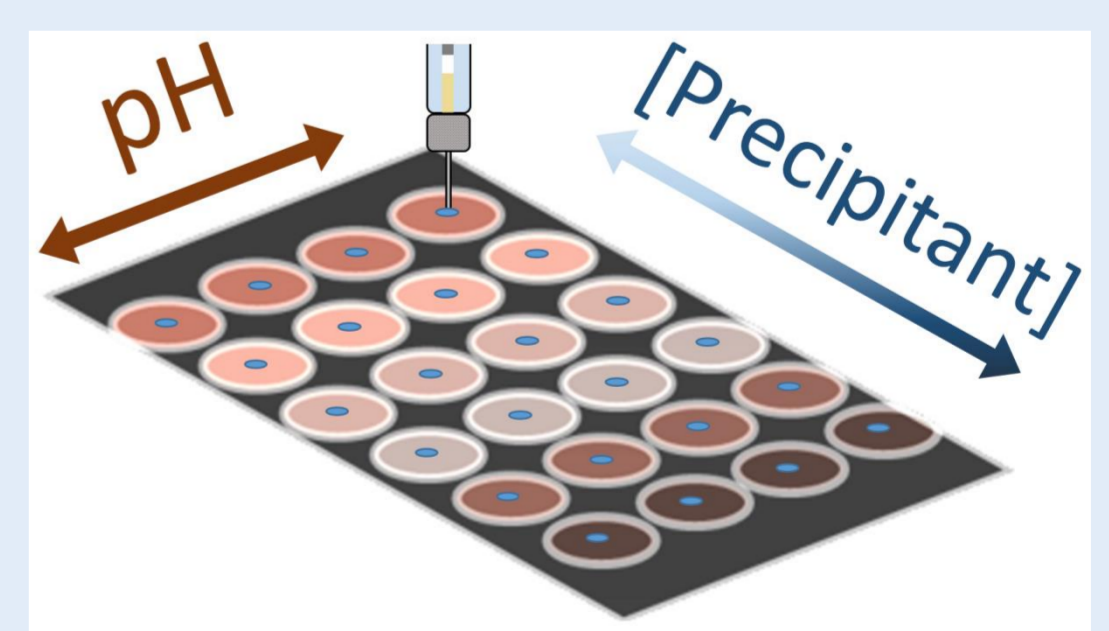
1. Mix LCP with the Douglas manual mixer.



2. Initial LCP screening or additive screening.



3. Optimize to find the optimum pH, concentration and precipitants.



4. Dispense LCP to coverslips. Much better harvesting than sandwich plates. Better optics than sitting drop.



Douglas
Instruments

For more information
www.douglas.co.uk